



Flat Panel Speaker

FPS-3040T/FPS-5060T



FPS-3040T

Flat Panel Speaker



KEY FEATURES

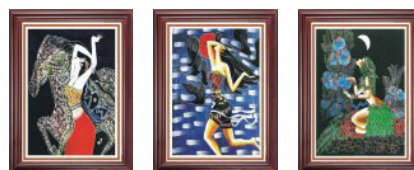
- The flat panel speaker extremely high sensitive and spreads sound to all direction almost 180° coverage.
- The sound distributes proportionally against distance without effect the sound quality
- Using latest technology material to the flat panel speaker, which pleasing to both the eye and ear

SPECIFICATIONS	
Power	10W
Input connection	Two input type (voltage 100V / resistance 4-8Ω)
Frequency respond	78-19KHZ
Sensitive	93dB
Painting size	30*40CM



FPS-5060T

Flat Panel Speaker



KEY FEATURES

- The flat panel speaker extremely high sensitive and spreads sound to all direction almost 180° coverage.
- The sound distributes proportionally against distance without effect the sound quality
- Using latest technology material to the flat panel speaker, which pleasing to both the eye and ear

SPECIFICATIONS	
Power	30W
Input connection	resistance 8Ω
Frequency response	75-19KHZ
Sensitive	92dB
Painting size	50*60CM